



**MTS**<sup>®</sup>  
MEDICATION TECHNOLOGIES

**Innovations For Health.**<sup>®</sup>



**SureSeal**<sup>™</sup>  
Operator's Manual

# Safety Instructions

WHEN USING YOUR HEAT SEALER,  
BASIC PRECAUTIONS SHOULD ALWAYS BE FOLLOWED,  
INCLUDING THE FOLLOWING:

1. Read all instructions.
2. Use heat sealer only for its intended use.
3. To reduce the risk of electric shock, do not immerse the heat sealer in water or other liquids.
4. Never pull cord to disconnect from outlet, instead grasp plug and pull to disconnect.
5. Do not allow cord to touch hot surfaces, allow heat sealer to cool completely before storing.
6. Do not operate heat sealer with a damaged cord, or if the equipment has been dropped or damaged. To reduce the risk of electric shock, do not disassemble or attempt to repair the heat sealer, take it to a qualified service person for examination and repair. Incorrect reassembly or repair could cause a risk of fire, electric shock, or injury to persons when the equipment is used.
7. Close supervision is necessary for any heat sealer being used by or near children. Do not leave equipment unattended while connected.
8. Burns can occur when touching hot metal parts.
9. To reduce the likelihood of circuit overload, do not operate other high voltage equipment on the same circuit.
10. If an extension cord is necessary, then a 20 amperage rated cord should be used. Cords rated for less amperage may overheat, care should be taken to arrange the cord so that it cannot be pulled or tripped over.

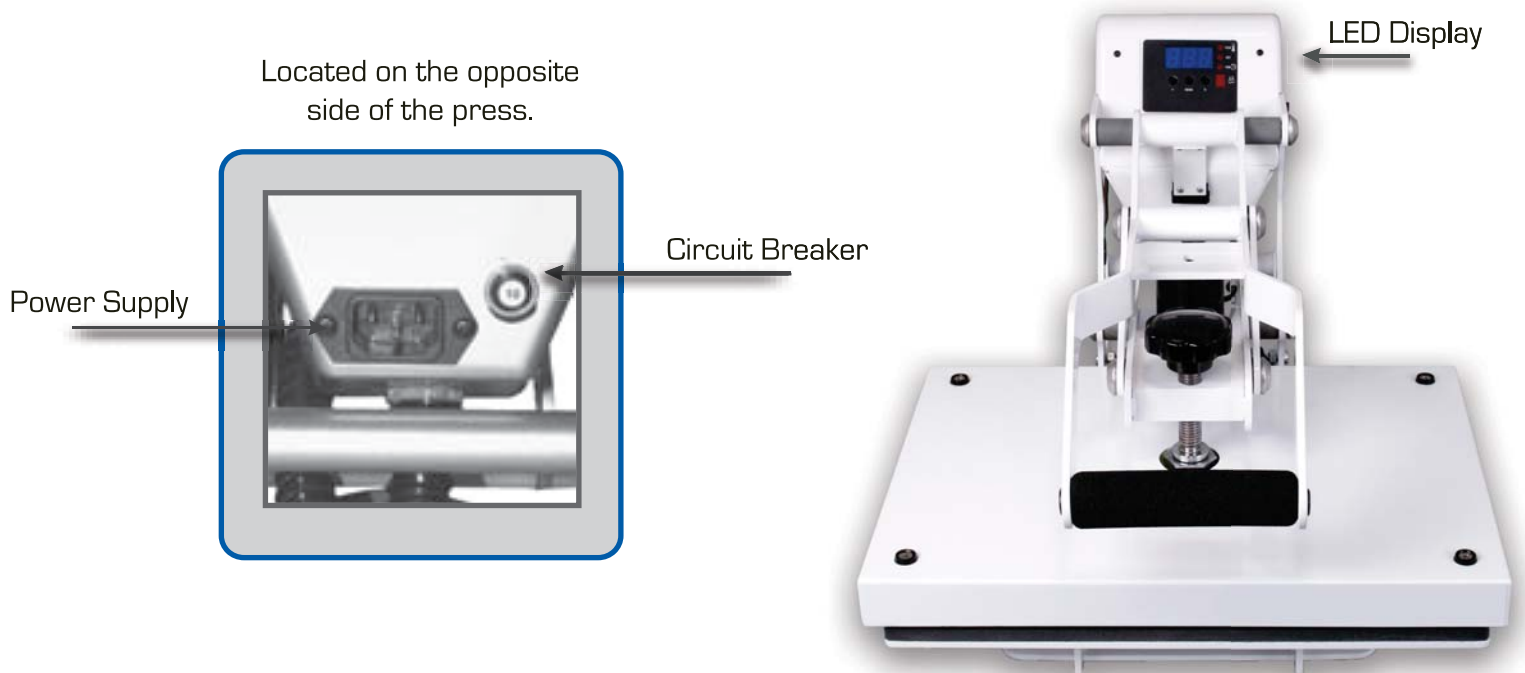
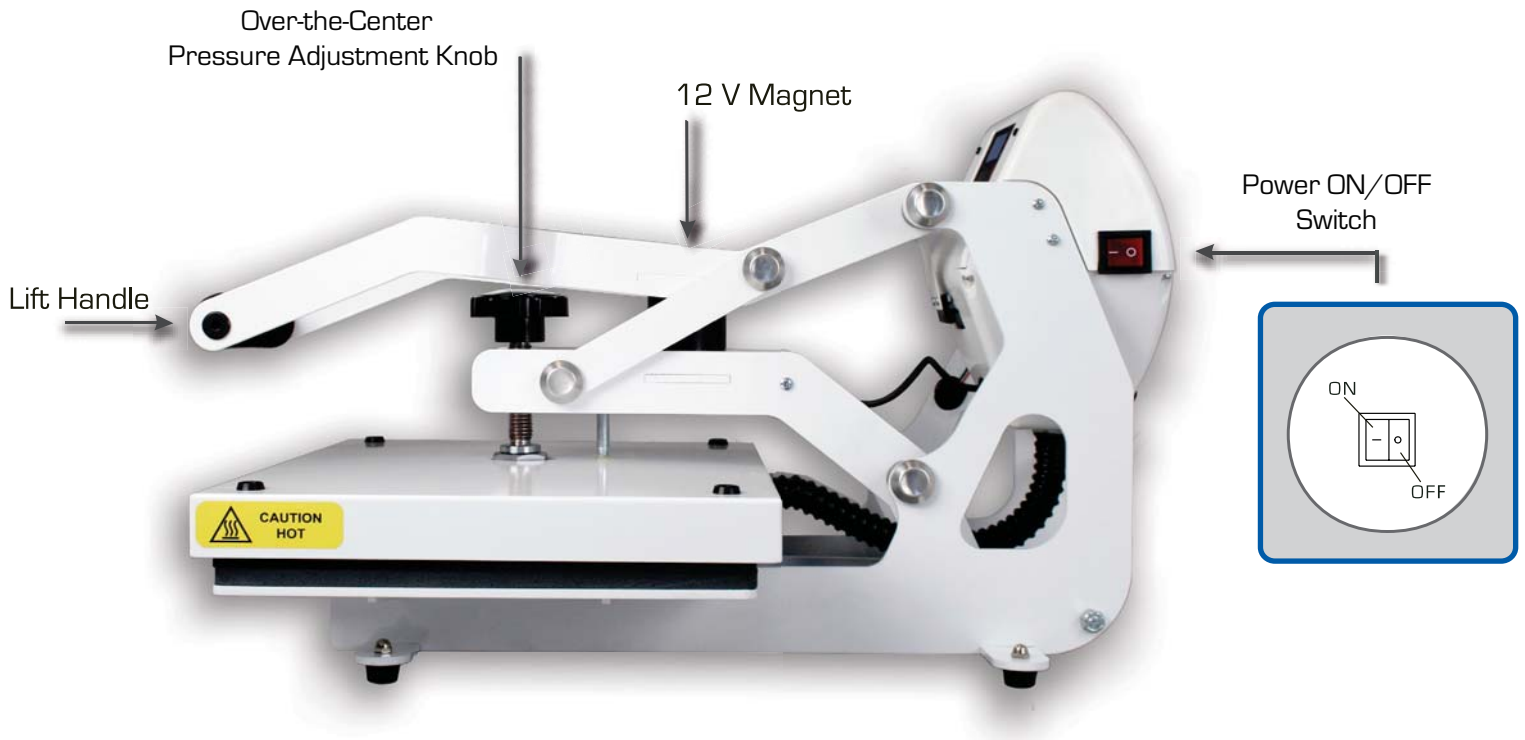
**SAVE THESE INSTRUCTIONS**

# Table of Contents

---

Machine View	4
Control Panel Guide	5
Operating Instructions	6-11
Connecting the System	6
Turning the System On	7
Adjusting the Temperature	8
Adjusting the Time	9
Adjusting the Pressure	10
Seal	11
Troubleshooting	12
Parts Location Guide	13
Electrical Schematic	14
Contact Information	15

# Machine View



# Control Panel Guide



Digital Display

Temperature Indicator

Set Indicator

Time Indicator

Pressure Indicator

Increase

Mode Select

Decrease

# Operating Instructions

The SureSeal Heat Sealer Operating Instructions are designed with the user in mind. Carefully read and follow the step-by-step instructions for best results.



- To avoid burns, do not touch the heated platen during use.
- Keep hands clear of the upper platen of the press during platen lock down as the pressure may cause injury.
- Press should be placed on a sturdy, suitable stand at least 36"L x 24"W x 29"H.
- Work area must be kept clean, tidy and free of obstructions.
- Power supply cord must be disconnected before cleaning or servicing press.

## Connecting the System

### 1. CONNECT THE POWER CORD:

- Connect the power cord into a properly grounded electrical outlet with a sufficient amperage rating.
- **VOLTAGE:** 120 Volt - The SureSeal Heat Sealer requires a full 15 amp grounded circuit for 120 volt operation.  
240 Volt - The SureSeal Heat Sealer requires a full 7.5 amp grounded circuit for 240 volt operation.
- **EXTENSION CORDS:** If used, should be as short as possible and not less than 12 gauge. Heavy duty cords are recommended.
- **CIRCUITS:** that have less than 15 amps or that have other high demand equipment or heat presses plugged in should not be used.

NOTE: If the supply cord is damaged, it must be replaced by the manufacturer, its service agent or a similarly qualified person in order to avoid hazard. Use HSJ type, rated 250 V - 10 AMP for replacement

**CAUTION:** Failure to follow these instructions will cause:

1. Erratic controller functions.
2. Inaccurate displays and slow heat-up.
3. The circuit breaker to disengage.

## Turning the System On

**2. SWITCH THE SYSTEM ON:** See the diagram below for switch placement.

- Locate the packaging bolt positioned on the top-center of the press.  
Packaging bolt must be removed prior to turning press on or operating press.



**NOTE:** Your SureSeal Heat Sealer is equipped with an Auto Sleep Mode. When the machine is not in use for a period of two hours, it will enter an energy saving sleep mode. To restore to normal operating mode, press any button on the display panel and allow the Heat Sealer to return to the target temperature.

- Now, locate the Power ON/OFF Switch on the side of the press, then turn the Power Switch to ON.

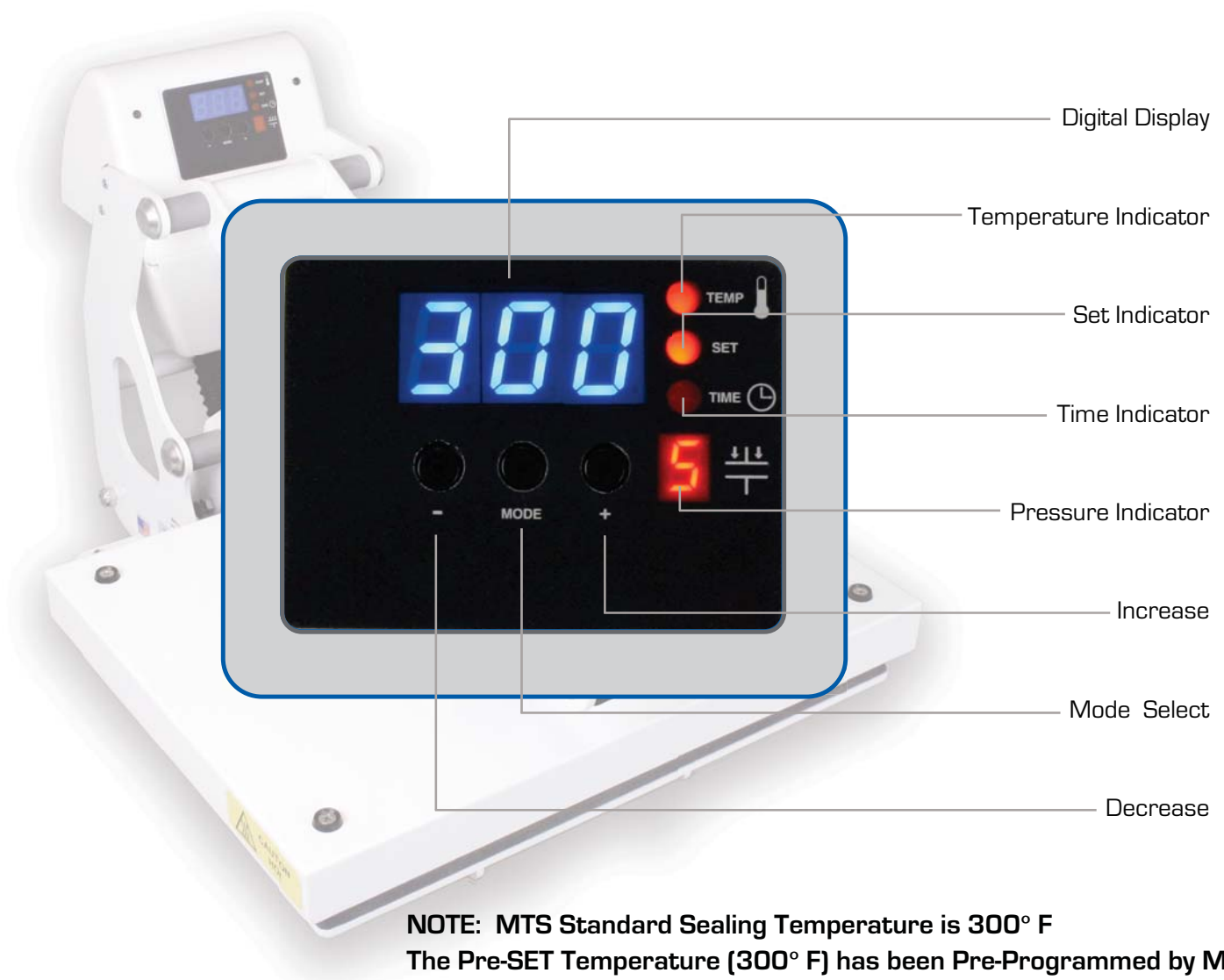


# Adjusting the Temperature

## 3. ADJUST THE TEMPERATURE

- Locate the LED Display on the Press.
- Press the Mode Select button located in the center of the Control Panel.  
The [SET] and [TEMP] lights located next to the display will illuminate indicating you are in the adjust temperature mode.
- Next, press the [-] button located to the left of the Mode Select button to lower the temperature setting, or press the [+] button located to the right of the Mode Select button to raise the temperature setting. The temperature can be set from 170°F (76°C) to 430°F (220°C).

The LED will display changes as you make them.



## Adjusting the Time

### 4. ADJUST THE TIME

The SureSeal Heat Sealer has two time settings. This will allow you to set different times when a two step application is required. For single step applications, you simply set both time settings the same.

Once you have completed adjusting the temperature, press the Mode Select button again. This will advance you to the Time #1 Mode. The set and time lights will illuminate, indicating that you are in the Time # 1 Mode.

Adjust the time in the same manner that you adjusted the temperature. Once you have the Time # 1 set, push the Mode Select button again to advance to the Time # 2 setting. All three red LED lights will illuminate indicating that you are in the Set Time # 2 Mode. Select the desired time and push the Mode Select button again to exit the time settings. All lights will be off and the press will return to the print mode.

- Press the Mode Select button **ONCE** to advance to the Adjust Temperature mode.
- Press the Mode Selection button **A SECOND TIME** to advance to the Time #1 Mode.
- Press the Mode Select button **A THIRD TIME** to advance to the Time #2 Settings.
- Press the Mode Select button **A FOURTH TIME** to return to the Heat Up/Operating Mode.



**NOTE: The PRE-SET Seal Time is 8 seconds  
It has been PRE-SET for MTS Standard Cards and Blisters**

# Adjusting the Pressure

## 5. ADJUST THE PRESSURE

- First, locate the LED Display on the Press.  
(See figure 1)

The Pressure Adjustment Knob is located in the center of the heat platen  
(See figure 2)

- Adjust the pressure by turning the knob clockwise to increase pressure and counter clockwise to decrease pressure.

### PRESSURE READOUT

A visual Pressure Readout is located on the lower right side of the LED Display. When the handle is locked into the Print Position, a pressure number will be displayed. Readout will be on a scale of 0 - 9. A 0 Pressure readout would indicate no pressure at all and 9 would indicate very heavy Pressure.  
(See figure 1)

### Standard MTS cards will seal adequately between 5 - 7 seconds.

Each time a new paddle is used, place the empty paddle into the sealer and adjust it for the thickness of the paddle. Do not place pills in the paddle while making this adjustment.

- 1 - 3 = Light Pressure**
- 4 - 7 = Medium Pressure**
- 8 - 9 = Heavy Pressure**

To adjust the pressure, simply turn the Pressure Adjustment Knob to the right or clockwise to increase the pressure and to the left or counter clockwise to decrease the pressure. The readout will display the pressure when locked down in the print position.

**WARNING:** STRUCTURAL DAMAGE CAUSED BY EXCESSIVE PRESSURE IS NOT COVERED UNDER THE LIMITED WARRANTY!



Figure 1

Pressure Readout

Over-the-Center Pressure Adjustment Knob



Figure 2

## Seal

### 6. SELECTING THE TYPE OF PADDLE

- Select a cork/paddle suitable for the size blisters that you will be filling, i.e., 30's, 60's, or 90's.
  - Place the blister into the card and rest it on the cork/paddle, foil side up. [See figure 1]
  - Fill the blisters with medication and fold over the foil side.
  - Make sure the foil side is folded over on both cards [See figure 2]
  - Once your sealer has reached the correct temperature, place the paddle onto the base plate, approximately centering it. [See figure 3]
  - Pull the handle down, and lock the heat platen into the press position. This procedure will start the automatic timing process. [See figure 4]
  - The timer will automatically count down and will lift the heat platen into the "UP" position when the press cycle is complete.
- NOTE: Please be aware after the time is complete, gas shocks will automatically release the platen into the "UP" position.**
- Remove the paddle containing the sealed punch cards.
  - The timer will automatically re-set and you are ready to repeat the process.



figure 1

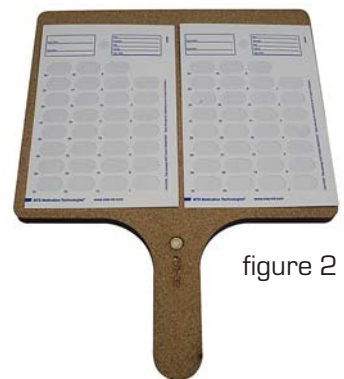


figure 2



figure 3



figure 4

**DO NOT PLACE HANDS INTO THE MACHINE**

## Troubleshooting

### CARDS ARE NOT SEALING CORRECTLY:

- Check temperature reading, ensure the temperature is set between 280° F and 300° F, if the reading is lower, wait for the sealer to warm up. If the sealer doesn't warm up, check the "SET" temperature using the guide in the "Operating Instructions" part of the manual.
- Check the seal time is set to 8 seconds, again use the "SET" procedure outlined in "Operating Instructions"
- Ensure the pressure is set correctly, adjust using top black knob, and guidelines in "Operating Instructions"
- Ensure there are no foreign materials on the heat plate itself.  
Occasionally a blister will be sealed to the heat plate by accident, this material or any other will need to be removed to get an effective seal.  
The use of a non-metallic spatula and a soft wire brush is recommended.

### TEMPERATURE JUMPING ERRATICALLY:

- This is likely to be a defective thermocouple.  
Please call MTS - see contacts page.

### ONE CARD IS SEALING WELL, THE OTHER SIDE IS POOR:

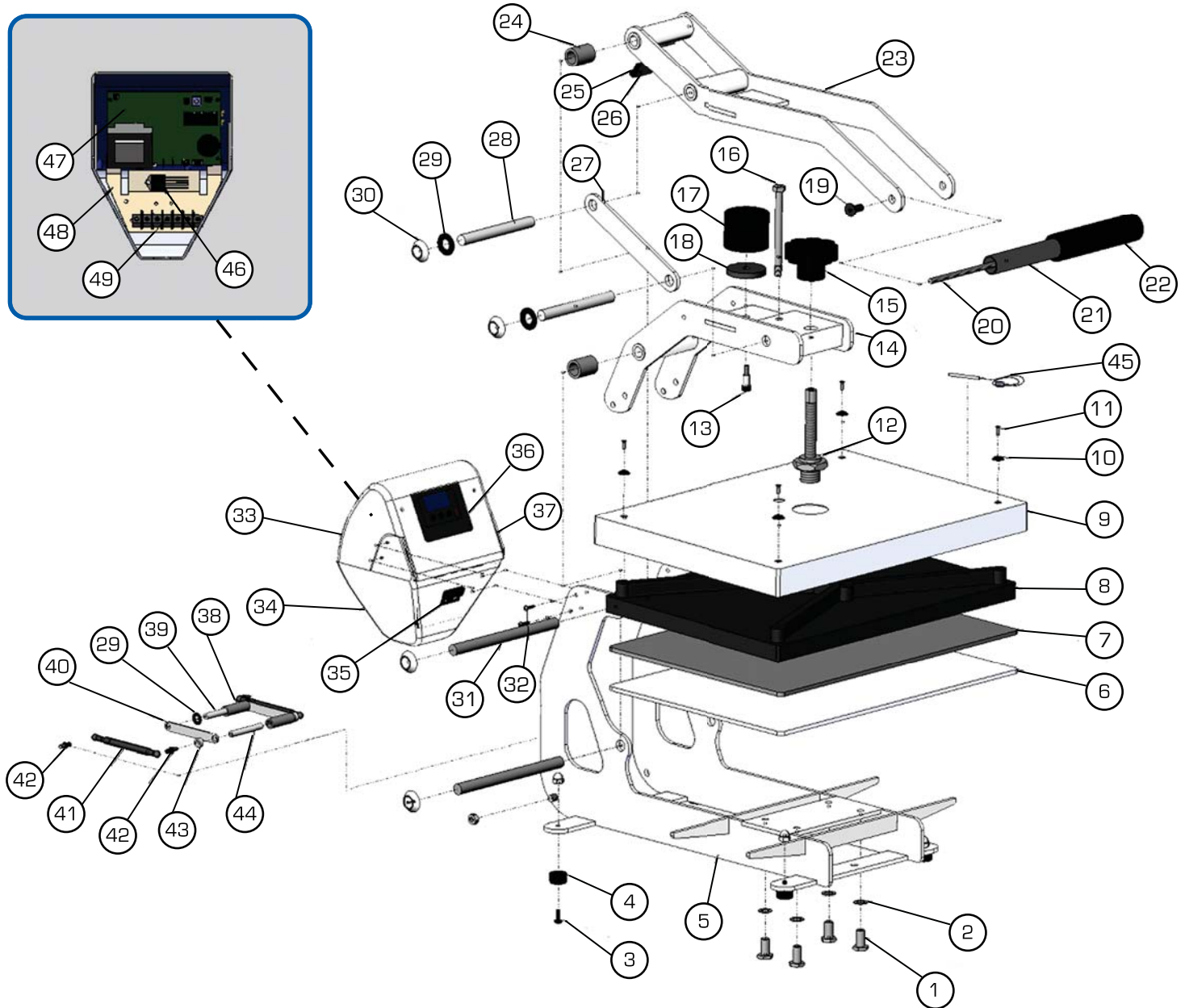
- This suggests that the heat distribution across the heat plate is uneven and a heater rod has malfunctioned, or
- The paddle in use may be worn out.  
Please call MTS - see contacts page.

### ROUTINE MAINTENANCE:

Please regularly check that there are no loose bolts or screws, loose wires, etc. Also, check that the power cord is free from damage.



# Parts Location Guide





---

# Contact Us

MTS Medication Technologies  
2003 Gandy Blvd. N.  
St. Petersburg, FL  
33702  
U.S.A.

Customer Service  
800.845.0053

Web  
[mts-mt.com](http://mts-mt.com)